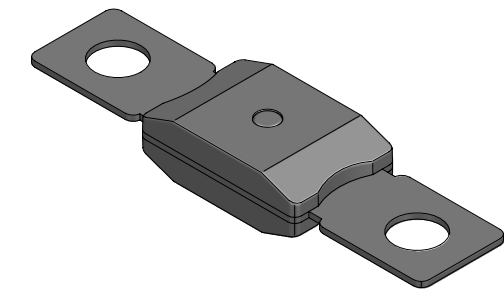
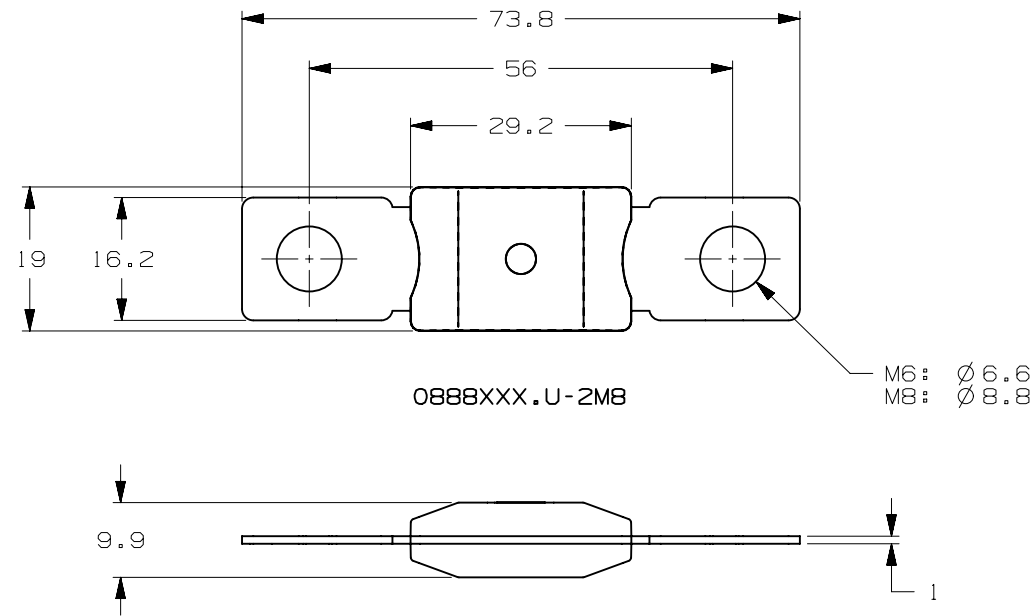
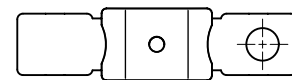


VERSIONS AND PART NUMBERS					
CURRENT RATE [A]	M6 1 HOLE	M6 2 HOLES	M8 1 HOLE	M8 2 HOLES	NO HOLES
60	0888060.U-1M6	0888060.U-2M6	0888060.U-1M8	0888060.U-2M8	0888060.U-NH
200	0888200.U-1M6	0888200.U-2M6	0888200.U-1M8	0888200.U-2M8	0888200.U-NH
250	0888250.U-1M6	0888250.U-2M6	0888250.U-1M8	0888250.U-2M8	0888250.U-NH
300	0888300.U-1M6	0888300.U-2M6	0888300.U-1M8	0888300.U-2M8	0888300.U-NH
450	0888450.U-1M6	0888450.U-2M6	0888450.U-1M8	0888450.U-2M8	0888450.U-NH
650	0888650.U-1M6	0888650.U-2M6	0888650.U-1M8	0888650.U-2M8	0888650.U-NH

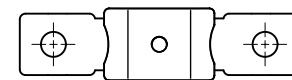
LTR	DATE	REVISION	DRW
A	01/FEB/23	526136GCA - INITIAL RELEASE	OPL



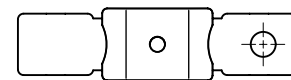
ISOMETRIC VIEW



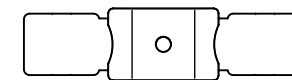
0888XXX.U-1M6



0888XXX.U-2M6



0888XXX.U-1M8



0888XXX.U-NH

MEGA HP 120V (SF56)						
TERMINAL MATERIAL:	COPPER ALLOY					
TERMINAL PLATING:	SILVER					
HOUSING MATERIAL:	PPA-GF33 (U.L. 94 FLAMMABILITY RATING - HB)					
	LINEAR DIMENSIONS				ANGLES	RADII
DIM	.5 - 6	6 - 30	30 - 120	120 - 400	±0.5°	±0.2
TOL	±0.1	±0.2	±0.3	±0.5		
	3RD ANGLE PROJECTION		Littelfuse		REVISION	DRWG. NO.
			CHICAGO, USA 773-628-1000		A	WEB-0888000.U