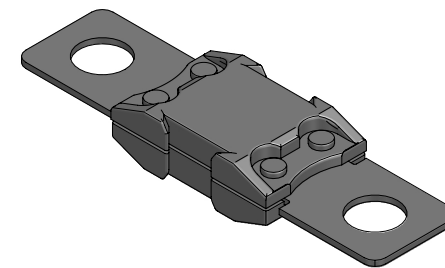
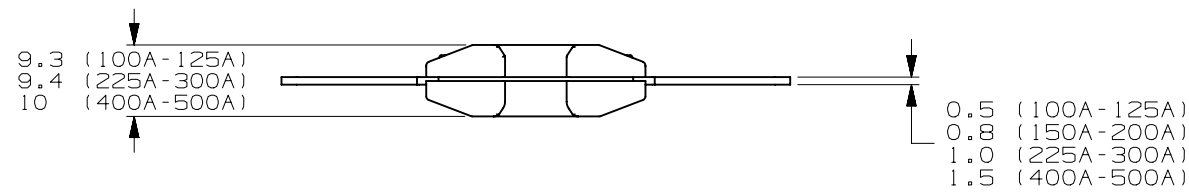
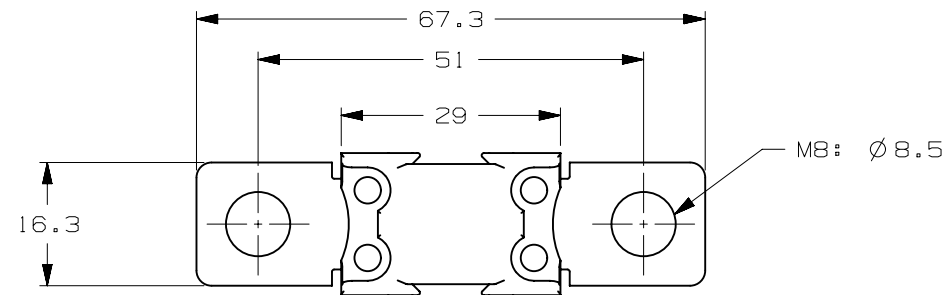


CURRENT RATE [A]	VERSIONS AND PART NUMBERS M8 2 HOLES
100	153.5395.6101
125	153.5395.6121
150	153.5395.6151
175	153.5395.6171
200	153.5395.6201
225	153.5395.6221
250	153.5395.6251
300	153.5395.6301
400	153.5395.6401
500	153.5395.6501

LTR	DATE	REVISION	DRW
A	01/FEB/23	526136GCA - INITIAL RELEASE	OPL



ISOMETRIC VIEW



BF2 32V					
TERMINAL MATERIAL:	COPPER ALLOY				
TERMINAL PLATING:	TIN				
HOUSING MATERIAL:	PET-GF33 (U.L. 94 FLAMMABILITY RATING - V0)				
CLEAR TOP HOUSING MATERIAL:	PES (U.L. 94 FLAMMABILITY RATING - V0)				
LINEAR DIMENSIONS				ANGLES	RADII
DIM	.5 - 6	6 - 30	30 - 120	120 - 400	±0.5° ±0.2
TOL	±0.1	±0.2	±0.3	±0.5	
3RD ANGLE PROJECTION		Littelfuse® CHICAGO, USA 773-628-1000		REVISION A	DRWG. NO. WEB-153.5395.0000