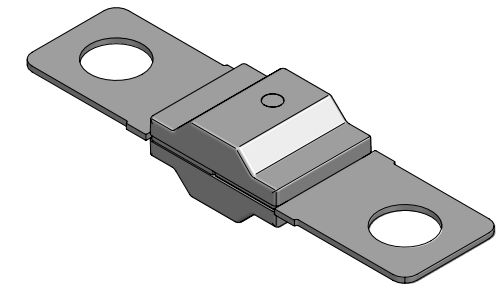
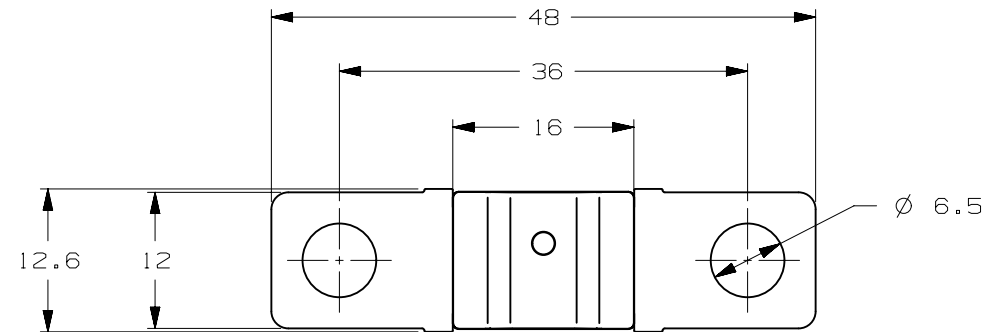
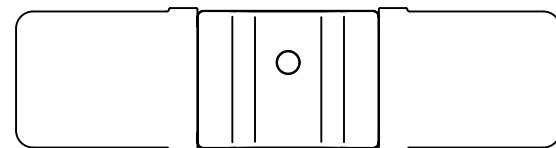
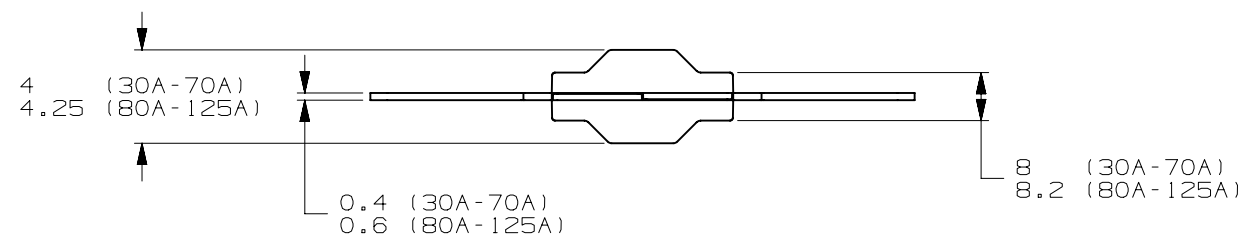


CURRENT RATE [ A ]	VERSIONS AND PART NUMBERS		
	M6 2 HOLES	M6 1 HOLE	NO HOLES
30	4998030.M-M6	4998030.M1M6	4998030.M-NH
40	4998040.M-M6	4998040.M1M6	4998040.M-NH
50	4998050.M-M6	4998050.M1M6	4998050.M-NH
60	4998060.M-M6	4998060.M1M6	4998060.M-NH
70	4998070.M-M6	4998070.M1M6	4998070.M-NH
80	4998080.M-M6	4998080.M1M6	4998080.M-NH
100	4998100.M-M6	4998100.M1M6	4998100.M-NH
125	4998125.M-M6	4998125.M1M6	4998125.M-NH
150	4998150.M-M6	4998150.M1M6	4998150.M-NH
175	4998175.M-M6	4998175.M1M6	4998175.M-NH
200	4998200.M-M6	4998200.M1M6	4998200.M-NH

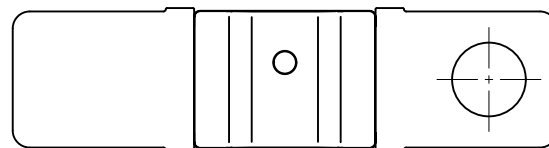
LTR	DATE	REVISION	DRW
A	01/FEB/23	526136GCA - INITIAL RELEASE	OPL



ISOMETRIC VIEW



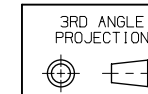
4998XXX.M-NH



4998XXX.M1M6

MIDI HP 70V	
TERMINAL MATERIAL:	COPPER
TERMINAL PLATING:	TIN PLATED
HOUSING MATERIAL:	PA66-GF25 FR (U.L. 94 FLAMMABILITY RATING - V0)

DIM	LINEAR DIMENSIONS				ANGLES	RADI
	.5 - 6	6 - 30	30 - 120	120 - 400		
TOL	±0.1	±0.2	±0.3	±0.5	±0.5°	±0.2



REVISION  
A

DRWG. NO.  
WEB-4998000.M